




MOONFLEET manor

Moonfleet Manor Hotel

Fleet Road, Weymouth, DT3 4ED

☎ 01305 786948

✉ events@moonfleetmanorhotel.co.uk

🌐 www.moonfleetmanorhotel.co.uk

🛏 36 rooms

🚗 BY ROAD

Moonfleet Manor Hotel offers free parking for up to 100 cars.

Distance from major UK cities

Bournemouth	40 miles	1 hour
Southampton	65 miles	1 hour 45 mins
London	140 miles	3 hours

🚆 BY TRAIN

Nearest station
Weymouth Station 15 mins by taxi

London Waterloo to Weymouth Station	3 hours
Southampton Station to Weymouth Station	1 hour 30 mins
Bournemouth Station to Weymouth Station	1 hour

✈ BY AIR

Exeter Airport	1 hour 20 mins by taxi
Southampton Airport	1 hour 40 mins by taxi

A helipad is available at the hotel, please call for landing information.



Delegate Packages

Day Package*

- Meeting room hire
- Stationery equipment (pencils, paper, flipchart)
- Bottled water
- Tea and coffee on arrival
- Mid morning refreshment break
- Two course hot or cold buffet lunch
- Afternoon pick me up break with homemade refreshments

24 Hour Package*

As day package above plus:

- Three course evening meal
- Overnight accommodation
- Full English Breakfast
- Full use of spa leisure facilities. (Treatments can be arranged at extra cost)

Half Day Package*

- Meeting room hire
- Bottled water
- Two servings of tea and coffee
- Stationery equipment (pencils, paper, flipchart)
- Working lunch

*Minimum numbers apply to all packages, please enquire when booking.

Working lunches, working breakfasts, exclusive hire and hourly rates are all available upon request.

Complimentary technical equipment available

- WiFi
- LCD Projector
- Projector screen

Moonfleet Manor's Georgian design and effortless interior flair make it one of Luxury Family Hotels most inviting meeting spaces. With panoramic views of the unspoilt Dorset countryside, overlooking Weymouth's Chesil Beach, the location is ideal for focused, distraction free meetings.

Team Building Activities

Moonfleet Manor has extensive grounds perfect for a wide variety of unique and exciting team building activities. There is also plenty of indoor space for any grey rainy days. Please call to discuss your specific requirements and the events team will be happy to advise you on your activity choices and arrangements.

On-site

- Obstacle Course*
- Orienteering*
- Archery*
- Snooker
- Squash
- Tennis

* Request details of external partner when calling to arrange these activities.

Off-site

- Sailing
- Horse Riding
- Golf
- Hiking the South West Coastal Path

Major attractions nearby

Weymouth & Portland National Sailing Academy · Sealife Centre
Monkey World · Tank Museum · Abbotsbury Swannery

Restaurant

The Restaurant is open for breakfast, lunch and dinner.

Service Hours

Breakfast: 7am – 10am

Lunch: 12pm – 2pm

Dinner: 7pm – 9pm

Spa

Indoor swimming pool open 8am – 6.45pm and treatment rooms open 10am – 6pm.

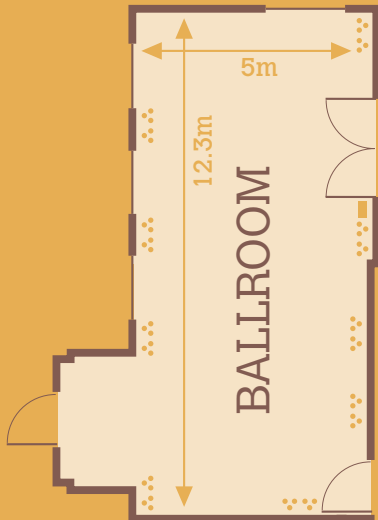
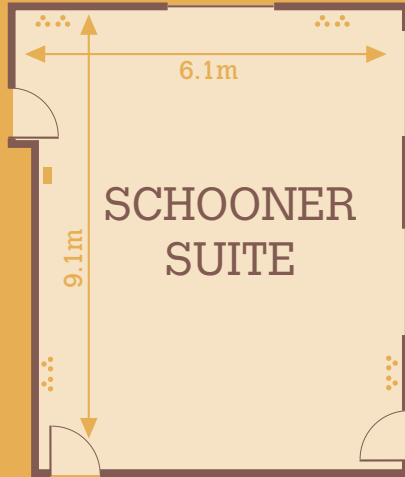
Disabled Access

Disabled access available for all meeting rooms and restaurants. If you have any specific requirements, please enquire.

Green credentials are available upon request.



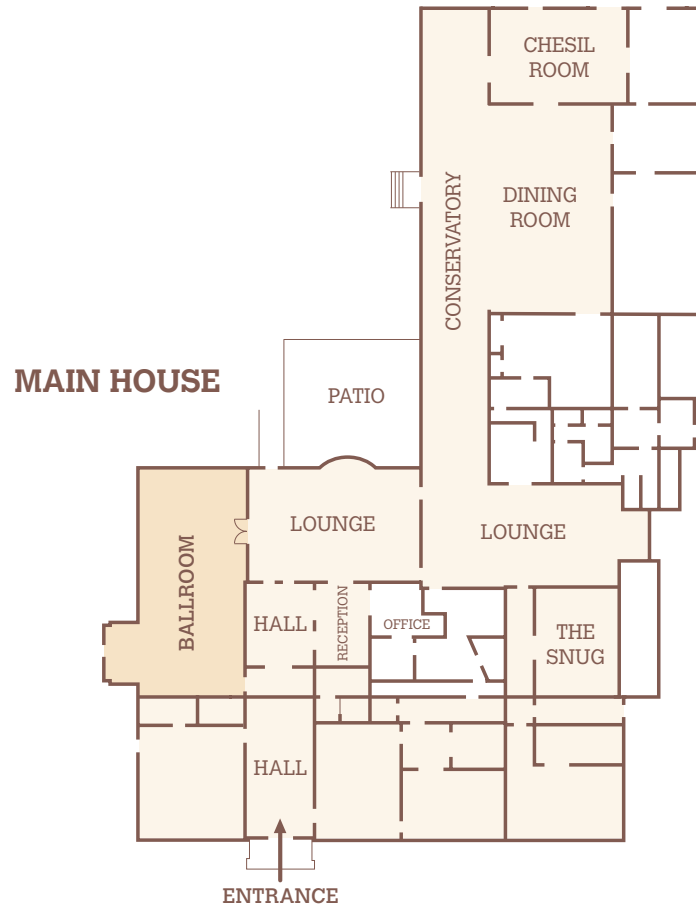
MOONFLEET
manor



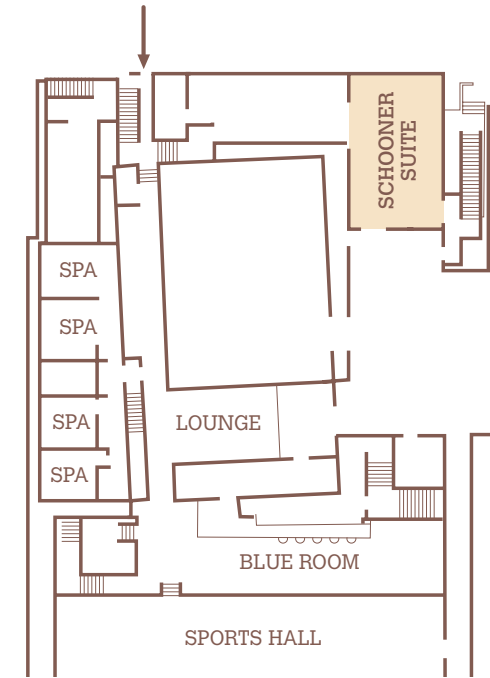
KEY

-  Power socket
-  Light switch

MAIN HOUSE



SEPARATE ANNEX



Drawings not to scale.

ROOM NAME	BALLROOM	SCHOONER SUITE
DESCRIPTION	The Ballroom is located in the heart of the hotel and offers a grand setting for any occasion. The room has plenty of natural daylight and leads out to the extensive gardens.	The Schooner Suite is located in a separate annexe and offers a formal private environment for meetings. An extensive range of breakout areas are located nearby.
Dimensions	12.3m x 5m	9.1m x 6.1m
Dining	40	40
Boardroom style	22	26
Theatre style	60	60
U-shape	32	32
Cabaret	25	30
Drinks reception	80	80
Speakers	✓	-
TV output	✓	-
Natural daylight	✓	✓
No. of double sockets	9	4
Floor	Ground	Separate Annexe – first floor
Ceiling height	High	Standard