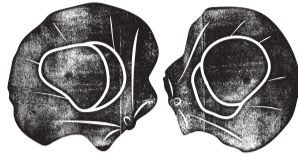
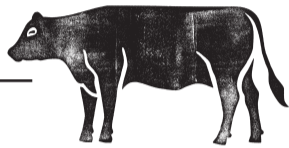


# À la carte



## Starters

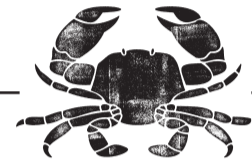
Greek salad; feta, olive, cucumber, garden tomato	8.00	Grilled crevettes, garlic butter, dressed salad	11.00
Pan fried Brixham scallops, chorizo and cauliflower	12.00	Smoked haddock croquette, baconaise, capers, shallots and rocket	9.00
Crayfish and prawn cocktail, marie rose sauce, compressed tomato, salad leaves	13.00	Pea, courgette, radish, watercress salad, Sherry dressing	8.00



## Grill

Our meats are supplied by Jurassic Coast Meats and our beef is sourced from Fossil Farm

28-day dry aged sirloin steak (8oz) served with chips and one sauce	27.00
28-day dry aged rib-eye steak (8oz) served with chips and one sauce	29.00
Moonfleet Manor burger with fries and celeriac slaw	16.00
Chicken and bacon burger with fries and celeriac slaw	16.00



## Fish & Shellfish

Catch of the day, new potatoes, greens	Market Price
South coast cod and salmon fish pie, seasonal greens	18.00
South coast fish Balinese curry, coconut rice, chilli flatbread	17.00
Exmoor moules served with fries and bread	
– Marinière	9.00/16.00
– Balinese	9.00/16.00



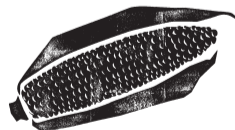
## Pasta & Salad

Prawns and Brixham crab butter, chilli dressed linguini	12.00/18.00
Moonfleet minted pea and leek risotto with parmesan crisp (V)	15.00
Superfood salad; Pomegranate, avocado, broccoli, quinoa, chickpeas, chilli, dressing (VE)	11.00
Caesar salad; croutons, anchovies, parmesan, dressing	13.00
– Add chicken	5.00
– Add hot smoked salmon	6.00
– Add crispy tofu (V)	4.00



## From the Garden

Aubergine Milanese, mixed greens, tomato sauce (V)	16.00
Sweet potato, butternut Balinese curry, coconut rice, chilli flatbread (VE)	16.00
Marinated jack fruit bao buns, kimchi, red cabbage, spring onion and cashew salad	13.00



## Sides

All 4.50

Roasted flat field mushrooms with garlic and thyme  
Rocket, parmesan, balsamic salad  
Seasonal vegetables  
Tenderstem broccoli  
Sweet potato fries  
French fries

If you have an allergy to certain foods, please inform a member of the team before ordering.  
A discretionary service charge of 10% will be added to your bill, and all prices are inclusive of VAT.

If your little one's fork keeps making its way to your plate during meal time, please ask a member of staff about the possibility of half a portion, at half the price.



# **Moonfleet Manor**

JURASSIC COAST